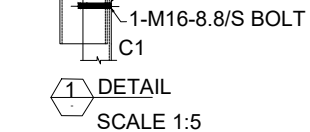


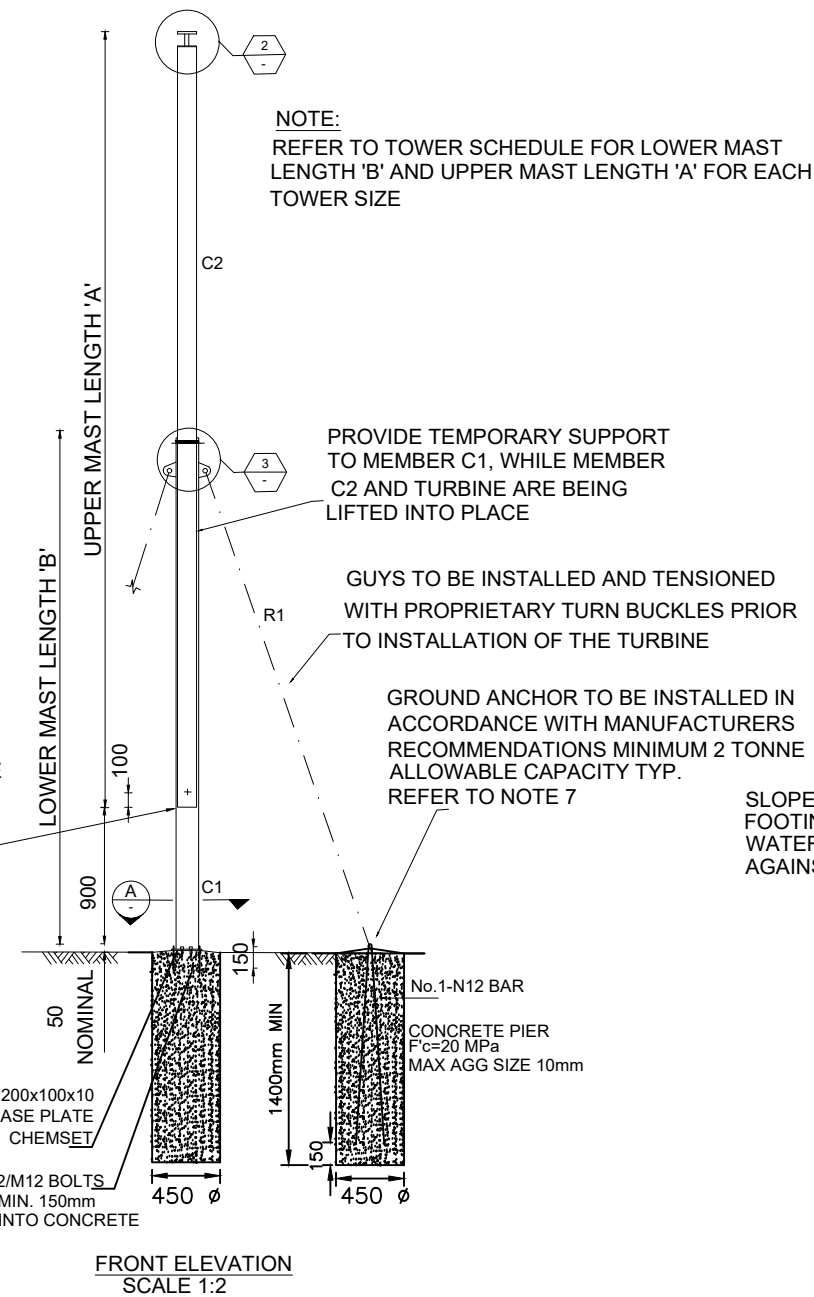
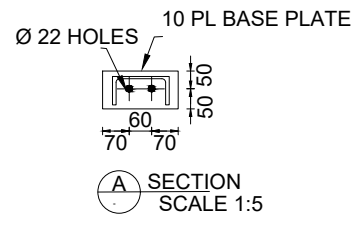
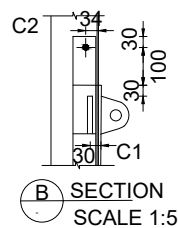
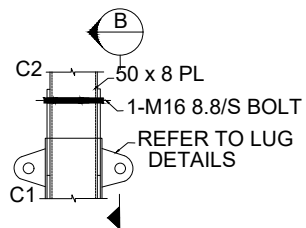
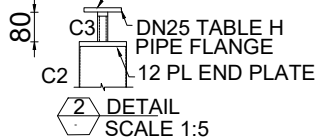
PLAN  
SCALE 1:5

WELD A 200mm LENGTH OF 500kg WORKING LOAD LIMIT CHAIN TO THE BOTTOM OF MEMBER C2, AND BOLT THE OTHER TO THE FLANGE OF MEMBER C1

PROVIDE 10mm WASHER BETWEEN PFC AND SHS



FLANGE TO BE DRILLED TO SUIT TURBINE MOUNTING, PATTERN BY OTHERS. TURBINE TO BE BOLTED TO PIPE FLANGE VIA 6-M16/S BOLTS



FRONT ELEVATION  
SCALE 1:2

NOTE:  
REFER TO TOWER SCHEDULE FOR LOWER MAST LENGTH 'B' AND UPPER MAST LENGTH 'A' FOR EACH TOWER SIZE

PROVIDE TEMPORARY SUPPORT TO MEMBER C1, WHILE MEMBER C2 AND TURBINE ARE BEING LIFTED INTO PLACE

GUYS TO BE INSTALLED AND TENSIONED WITH PROPRIETARY TURN BUCKLES PRIOR TO INSTALLATION OF THE TURBINE

GROUND ANCHOR TO BE INSTALLED IN ACCORDANCE WITH MANUFACTURERS RECOMMENDATIONS MINIMUM 2 TONNE ALLOWABLE CAPACITY TYP. REFER TO NOTE 7

SLOPE TOP OF FOOTING TO PREVENT WATER PONDING AGAINST STEEL WORK

HOLD DOWN BOLTS TO BE 'HILTI' HAS M16 WITH HVU M16-125 CAPSULE OR APPROVED EQUIVALENT

10 NOMINAL HIGH STRENGTH NON-SHRINK GROUT

200x100x10 BASE PLATE CHEMSET

2/M12 BOLTS MIN. 150mm INTO CONCRETE

SIDE ELEVATION  
SCALE: 1:2

NOTES:

1. REFER TO 22-14878-S001 FOR STRUCTURAL GENERAL NOTES.
2. ALL BOLTS TO BE M16.8/S UNLESS NOTED OTHERWISE.
3. MINIMUM ALLOWABLE BEARING CAPACITY UNDER FOOTING = 100 kPa. TO BE CONFIRMED ON SITE PRIOR TO FOOTING CONSTRUCTION.
4. ALL TOWERS DESIGNED FOR A MAXIMUM WIND SPEED OF 40m/s.
5. CONCRETE CHARACTERISTIC COMPRESSIVE STRENGTH  $f_c = 20\text{MPa}$ .
6. ALL MEMBERS TO BE HOT DIP GALVANISED.
7. GROUND ANCHORS ONLY EFFECTIVE IN CLAY FOUNDATION, AREAS OF SAND, ROCK AND CONCRETE WOULD REQUIRE THE CONSTRUCTION OF A SUITABLY DESIGNED FOOTING TO ACHIEVE THE REQUIRED 2 TONNE CAPACITY.

MEMBER SCHEDULE

| MARK | SECTION      |
|------|--------------|
| C1   | 150 PFC      |
| C2   | 125 x 5 SHS  |
| C3   | 26.9 x 4 CHS |
| R1   | Ø12 ROD      |

TOWER SCHEDULE

| TURBINE DIAMETER (mm) | SELF WEIGHT OF TURBINE (kg) | DIMENSION 'A' (mm) | DIMENSION 'B' (mm) |
|-----------------------|-----------------------------|--------------------|--------------------|
| 2050                  | 12                          | 4250               | 3000               |

AAA Design & Development Pty Ltd

34/13 Norval Court, MAROOCHYDORE, QLD 4558  
Tel/Fax: (07) 5479 6747  
Mob: 0422 039 247  
email: d.lesmes@aaadesign.com.au



| No. | Description | Date |
|-----|-------------|------|
|     |             |      |
|     |             |      |
|     |             |      |
|     |             |      |
|     |             |      |
|     |             |      |
|     |             |      |

AEROMAGNETICS  
TURBINE TOWER

APPROVED  
Jose David Lesmes Tirado

RPEQ No. 07198  
For & on behalf of AAA  
Design & Development Consulting

FREE STANDING TOWER  
ARRANGEMENT AND DETAILS

Project number A080-01  
Date 04-11-2019  
Drawn by R.L.B  
Checked by J.D.L

2663 - 01

Scale @ A3 1:100